



Air to Air Heat Exchanger with DX-coil

Greater comfort and reduced load

Functionality built into cooling system reduces load on cooling beyond that of the heat exchanger itself. This improves air quality and ensures maximum comfort throughout room being cooled.

Free cooling at night

When the air outdoor is cooler at night, the system expels warm air from the room. This reduces the air conditioning load the next day for improved energy efficiency.

Flexible control

Supply and exhaust fan speed ratios can be changed for improved air volume control that best matches the needs of the environment and location.



Remote controller
NRC-01HE

MMD-VN(K)***HEX1E/HEX1E2

*Limitations

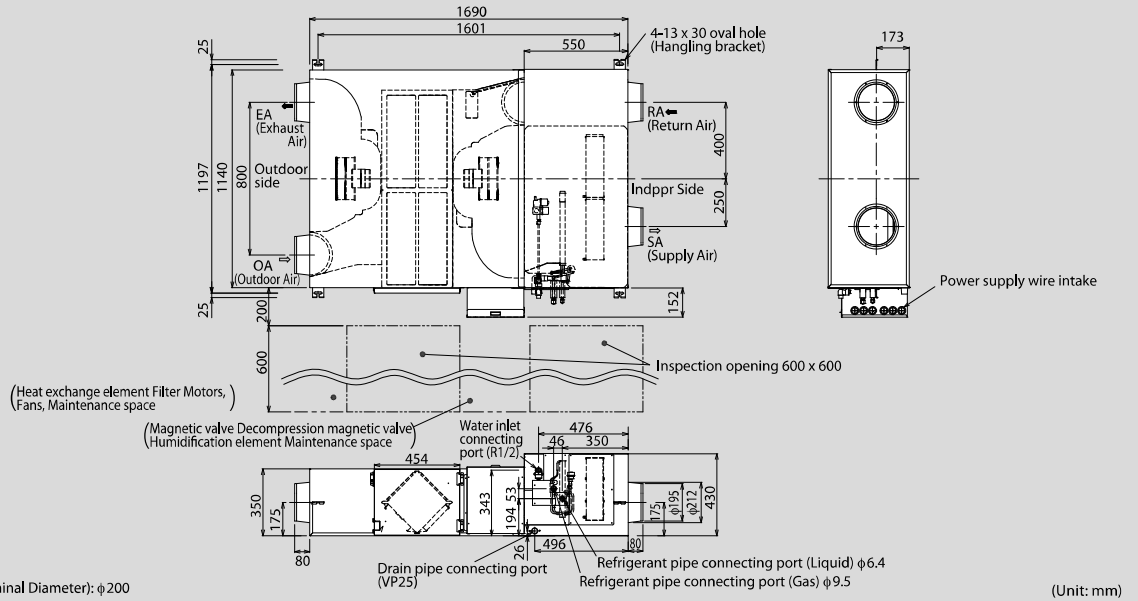
The total capacity of indoor units combined should be within 80 - 135% of the capacity of the outdoor unit.
The capacity of the air to air heat exchanger should be no more than 30% of the capacity of the outdoor unit.

Technical specifications

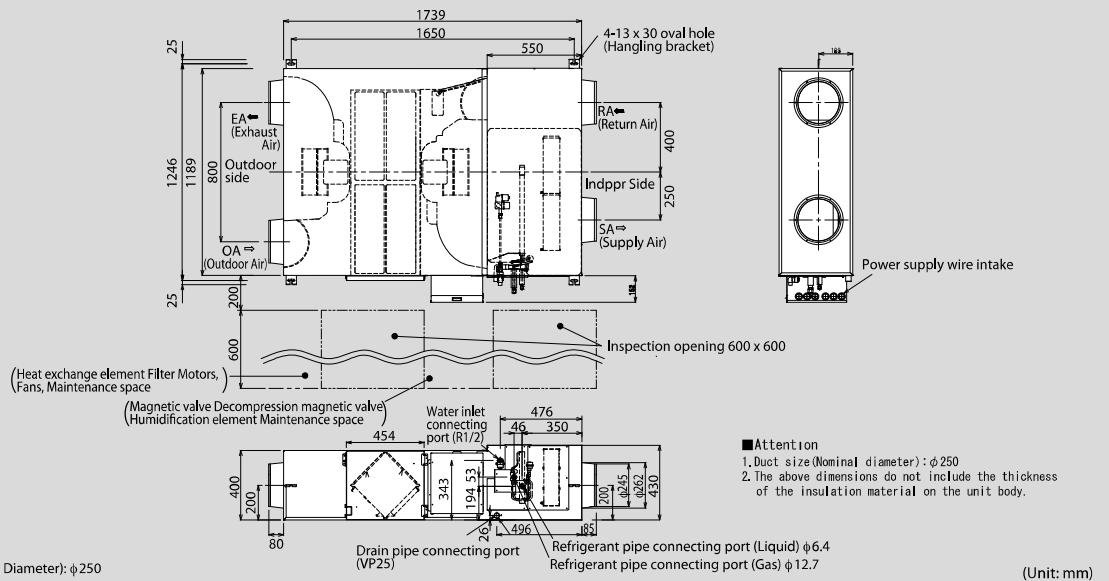
Model name				MMD-VK(K)502HEX1E	MMD-VK(K)802HEX1E	MMD-VK(K)1002HEX1E
Fresh air conditioning load	Cooling(*1)		kW	4,10 (1,30)	6,56 (2,06)	8,25 (2,32)
	Heating(*1)		kW	5,53 (2,33)	8,61 (3,61)	10,92 (4,32)
Power supply						
Temperature exchange efficiency power input (Heat exchange mode)		Extra high	%	70,5	70,0	65,5
		High	%	70,5	70,0	65,5
		Low	%	71,5	72,5	67,5
Enthalpy exchange efficiency	Colling	Extra high	%	56,5	56,0	52,0
		High	%	56,5	56,0	52,0
		Low	%	57,5	59,0	54,0
	Heating	Extra high	%	68,5	70,0	66,0
		High	%	68,5	70,0	66,0
		Low	%	69,0	73,0	68,5
Power input (heat exchange mode)		Extra high	kW	0,300	0,505	0,550
		High	kW	0,280	0,465	0,545
		Low	kW	0,235	0,335	0,485
Running current		Extra high	A	1,30	2,25	2,46
		High	A	1,21	2,07	2,43
		Low	A	1,01	1,46	2,16
Fan unit	Standard air flow	Extra high	m ³ /h	500	800	950
		High	m ³ /h	500	800	950
		Low	m ³ /h	440	640	820
	External static pressure	Extra high	Pa	120	120	135
		High	Pa	105	100	120
		Low	Pa	115	100	105
Air flow limit	Lower limit	m ³ /h	330	480	640	
	Upper limit	m ³ /h	600	960	1140	
Sound pressure		Extra high	dB	37,5	41,0	43,0
		High	dB	36,5	40,0	42,0
		Low	dB	34,5	38,0	40,0
Appearance				Zinc hot dipping steel plate		
Outer dimension		Height	mm	430	430	430
		Width	mm	1140	1189	1189
		Depth	mm	1690	1739	1739
Total weight			kg	84	100	101
Heat exchanger				Finned tube		
Heat - insulating material				Flexible urethane foam		
Air filter				Standard filter (Gravitational method 82%) & High efficiency filter (Colorimetric method 65%)		
Controller				Remote controller (separately sold parts)		
Connecting piping	Gas side		mm	Ø9,5	Ø12,7	Ø12,7
	Liquid side		mm	Ø6,4	Ø6,4	Ø6,4
Drain port (nominal dia. mm)				25 (Polyvinyl chloride tube)		

*1 Cooling and heating capacities are based on the following conditions: Cooling capacities are based on: Indoor temperature: 27°CDB/19°CWB, Outdoor temperature: 35°CDB
Heating capacities are based on: indoor temperature: 20°CDB, Outdoor temperature: 7°CDB/6°CWB Fan is based on Extra High and High. The figures in () indicate the heat reclaimed from the heat recovery ventilator. When calculating the capacity mode as indoor units, please use as below : MMD-VN502HEXE : 1HP, MMD-VN802HEXE : 1,7HP, MMD-VN1002HEXE : 2,0HP.

MMD-VN(K)502HEX1E



MMD-VN(K)802HEX1E to VN(K)1002HEX1E2



Options

