

Ceiling Type

Comfortable ambience

Top-class quietness

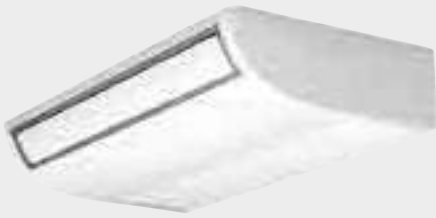
- New design reduces noise level to half that of conventional units.

Flap control

- The airflow angle is automatically set to the most suitable setting according to your cooling or heating needs, and an automatic swing mode enables airflow to reach all areas of the room to create a comfortable ambience.
- Air taking - in port (duct sold separately).

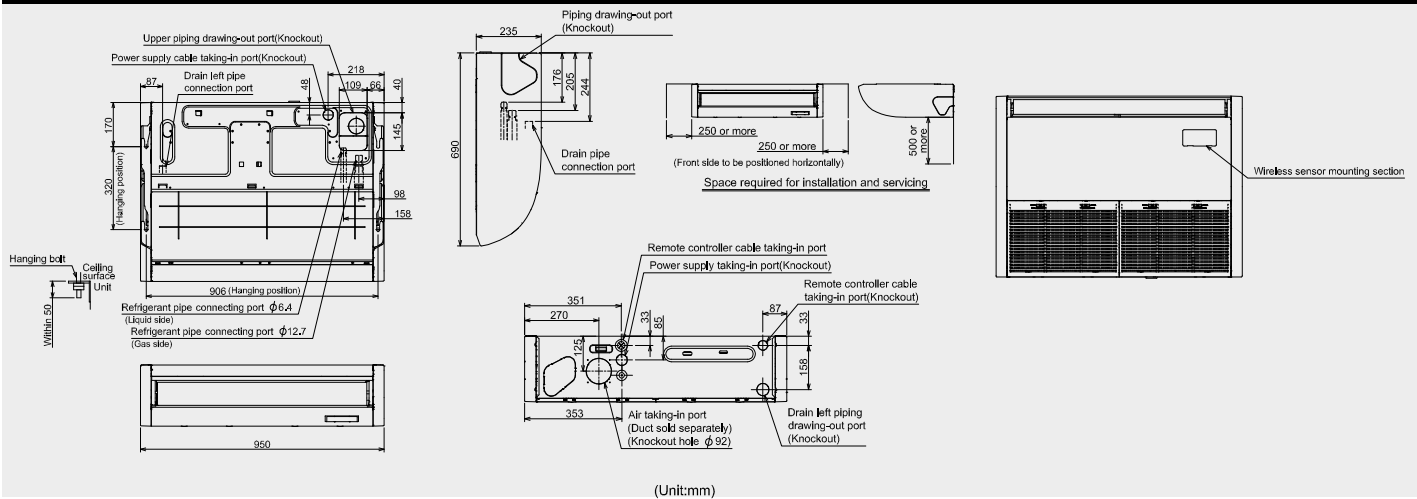
Installation efficiency

The unit can be suspended from the ceiling simply by adjusting two screws on the intake grill, avoiding complex procedures which can involve up to a dozen installation screws.



MMC-AP***7HP-E

MMC-AP0157HP1-E, AP0187HP1-E



Technical specifications

Model name	MMC-	AP0157HP1-E	AP0187HP1-E	AP0247HP1-E	AP0277HP1-E	AP0367HP1-E	AP0487HP1-E	AP0567HP1-E	
Cooling/Heating capacity*1	(kW)	4.5/5.0	5.6/6.3	7.1/8.0	8.0/9.0	11.2/12.5	14.0/16.0	16.0/18.0	
Electrical characteristics	Power requirements	1-phase 50 Hz 230 V (220-240 V)/1-phase 60 Hz 220 V (Separate power supply for indoor units required.)							
	Power consumption 50 Hz/60 Hz	(kW)	0.033/0.033	0.034/0.034	0.067/0.067		0.083/0.083	0.111/0.111	
External dimensions	Height	(mm)	235						
	Width	(mm)	950	1,270			1,586		
	Depth	(mm)	690						
Total weight	(kg)	23		29		35			
Fan unit	Standard air flow (High/Mid/Low)	(m ³ /h)	840/690/540	960/720/540	1440/1020/750		1860/1350/1020	1860/1530/1200	2040/1650/1260
	Motor output	(W)	94				139		
Connecting pipe	Gas side	(mm)	ϕ 12.7			ϕ 15.9			
	Liquid side	(mm)	ϕ 6.4			ϕ 9.5			
	Drain port (nominal dia.)		20 (Polyvinyl chloride tube)						
Sound pressure level*2 (High/Mid/Low)	(dB(A))	36/34/28	37/35/28	41/36/29		44/38/32	44/41/35	46/42/36	
Sound power level (High/Mid/Low)	(dB(A))	51/49/43	52/50/43	56/51/44		59/53/47	59/56/50	61/57/51	

Note 1 : The capacities are measured under the conditions specified by JIS B 8615 based on the reference piping.

The reference piping consists of 5 m of main piping and 2.5 m of branch piping connected with 0 m height.

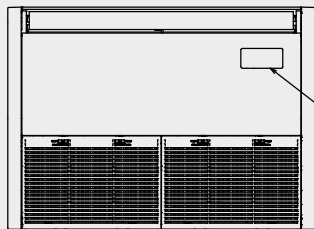
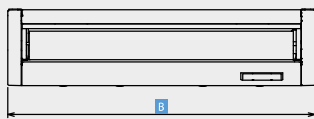
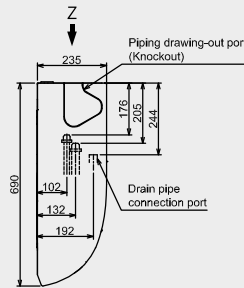
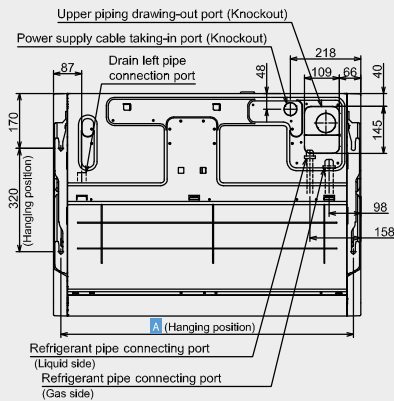
Note 2 : The sound level are measured in an anechoic chamber in accordance with JIS B 8616.

Normally, the values measured in the actual operating environment become larger than the indicated values due to the effects of external sound.

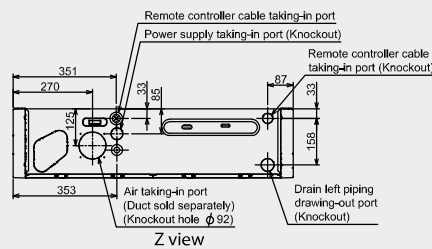
Note : Rated conditions Cooling : Indoor air temperature 27°C DB/19°C WB, Outdoor air temperature 35°C DB.

Heating : Indoor air temperature 20°C DB, Outdoor air temperature 7°C DB/6°C WB.

MMC-AP0157HP1-E to AP0567HP1-E

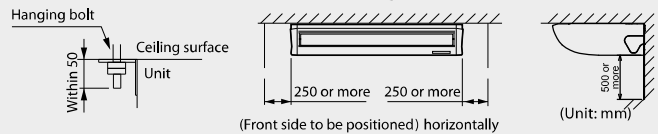


Wireless sensor mounting section



Model	MMC-	A	B
AP0157HP1-E, AP0187HP1-E		906	950
AP0247HP1-E, AP0277HP1-E		1223	1269
AP0367HP1-E, AP0487HP1-E, AP0567HP1-E		1540	1586

Space required for installation and servicing



Options

